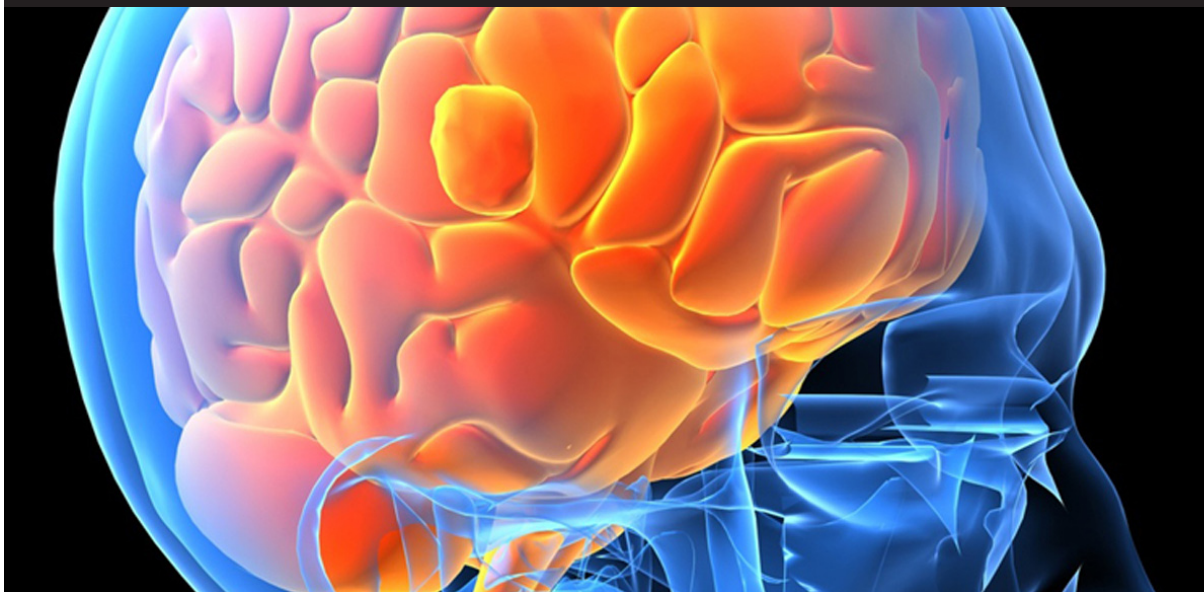


PENN STATE HARRISBURG

PSYCHOLOGY



The Program

The Psychology major emphasizes the scientific study of human behavior in areas such as cognition, development, learning, physiology, personality, and social processes. The curriculum is designed to provide students with a broad background in psychological theory and research and to develop the analytical and critical thinking skills necessary to be good consumers of scientific information.

The Psychology program exposes students to a number of areas of psychology but allows flexibility in the specific courses that are taken in each sub-area. Students are also required to obtain applied experience by completing an internship or by assisting faculty with their research. Elective credits can be used for additional internship or research experience.

The Psychology program prepares students for careers in local, state, and federal government and for entry-level psychological services positions in human service, applied behavior, human resources, and related fields. The Psychology program also provides a strong background for graduate education at both the master's and the doctoral level in counseling, social work, and many areas of psychology.

For a B.S. degree in Psychology, a minimum of 122 credits is required.

Entrance-to-Major Requirements:

Entry to the Psychology major requires a 2.00 cumulative grade-point average and an average of C (2.00) or better in any courses already taken in the major.

The Faculty

Michael A. Becker, Ph.D.
Associate Professor of Psychology

Thomas G. Bowers, Ph.D.
Associate Professor of Psychology

Gina Brelsford, Ph.D.
Assistant Professor of Psychology

Barbara A. Bremer, Ph.D.
Associate Professor of Psychology

Richard Fiene, Ph.D.
*Associate Professor of Psychology and
Human Development*

Richard Foxx, Ph.D.
Professor of Psychology

Rebecca LaFountain, Ed.D.
Assistant Professor of Psychology

Marissa Harrison, Ph.D.
Assistant Professor of Psychology

Cobi Michael
Instructor in Psychology

Senel Poyrazli, Ph.D.
Associate Professor of Counseling Psychology

Kimberly Schreck, Ph.D.
Associate Professor of Psychology

Maria Turkson, Ph.D.
Assistant Professor of Psychology

Xu Xu, Ph.D.
Assistant Professor of Psychology

For more information

PSYCHOLOGY

RICHARD FIENE, PH.D.
PROFESSOR IN CHARGE

School of Behavioral Sciences and Education
Penn State Harrisburg – W-311 Olmsted Building
777 West Harrisburg Pike, Middletown, PA 17057
rjf8@psu.edu • 717-948-6061

PENNSTATE



Harrisburg